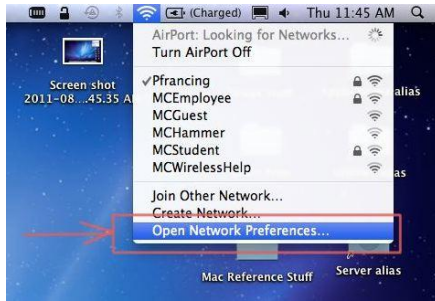
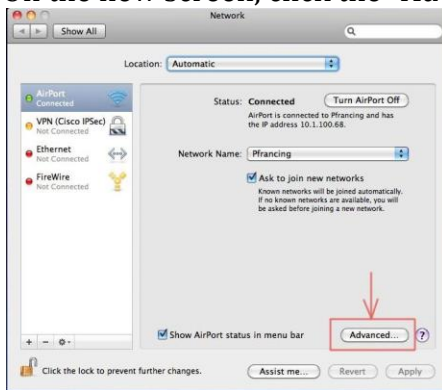


Connecting to MCEmployee

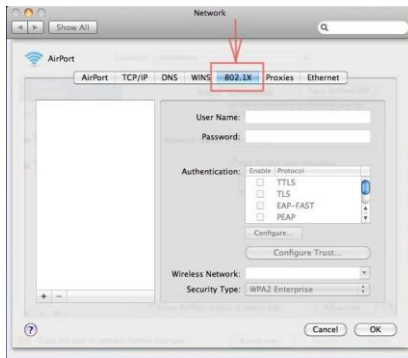
1. Click the Wireless icon in the tool bar and select “Network Preferences”:



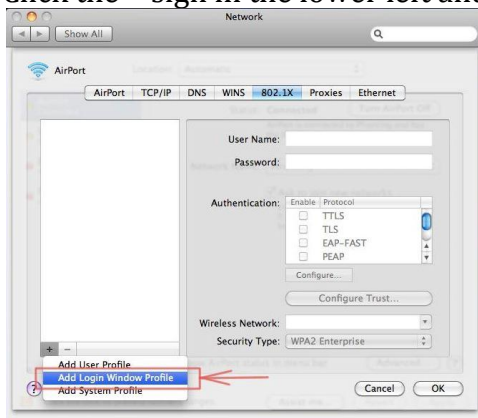
2. On the new screen, click the “Advanced” button:



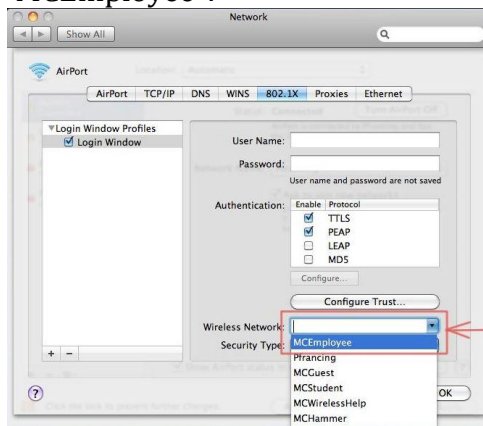
3. Click the “802.1x” tab at the top:



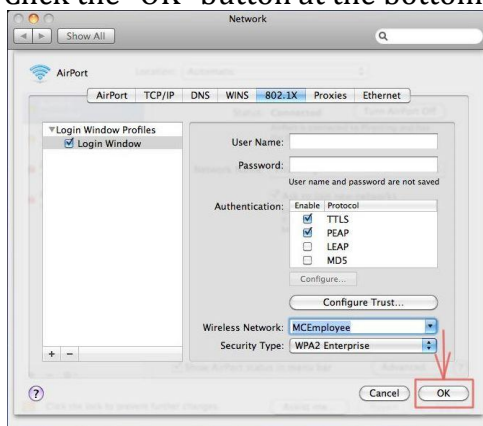
4. Click the + sign in the lower left and select “Add Login Window Profile”:



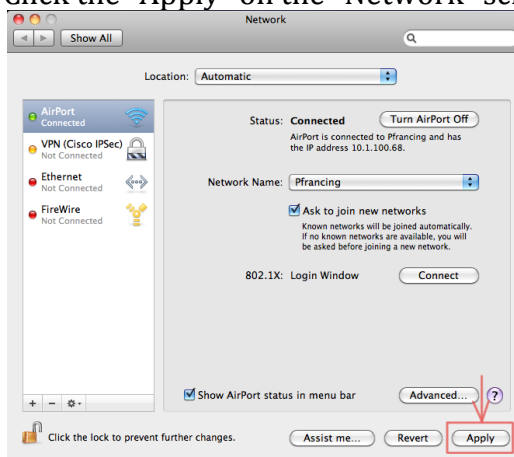
- Click the drop down arrow on the right for “Wireless Network” and select “MCEmployee”:



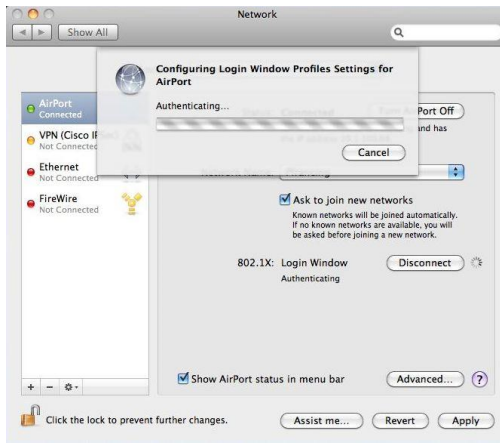
- Click the “OK” button at the bottom right:



- Click the “Apply” on the “Network” screen:



- After clicking “Apply”, the following window will pop up:



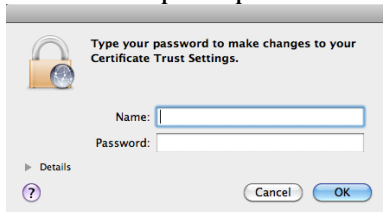
9. You will be prompted for your network User Name and Password:



10. A Certificate confirmation will pop up, click "Continue":



11. You will be prompted once again for your login information:



12. Log out and then back in